

## LEDSet 2.0 Software Introduction

1. Summarize
2. Start LEDSet software and then set up LED screen
3. Import Existing configuration file .HCP
4. Width and height parameters configuration
5. Set up network IP

## 1. Summarize

LedSet2.0 software is used to set up basic information of LED screen, including start Intelligent Setup Wizard ( to verify the LED screen), import existing configuration .HCP file, set up width and height of LED screen and screen IP.

While programs will be send by Intelligent Setup Wizard and LEDEditor software.

2. Start Intelligent Setup Wizard to set up LED screen

NOTE: here the pixel of LED screen for example is 16 (width), 8 (height); flat cable is one; RGB group per port is two (you can also check it from import side of LED screen). Client should know information of LED screen as much as possible.

Decode type: usually select “Scan [138]”.

If the LED screen has not been setup, then you can configure it by using Intelligent Setup Wizard, steps as follows:



Step 1: double click “ ” button, start it, as shown in image 1-1 in below:

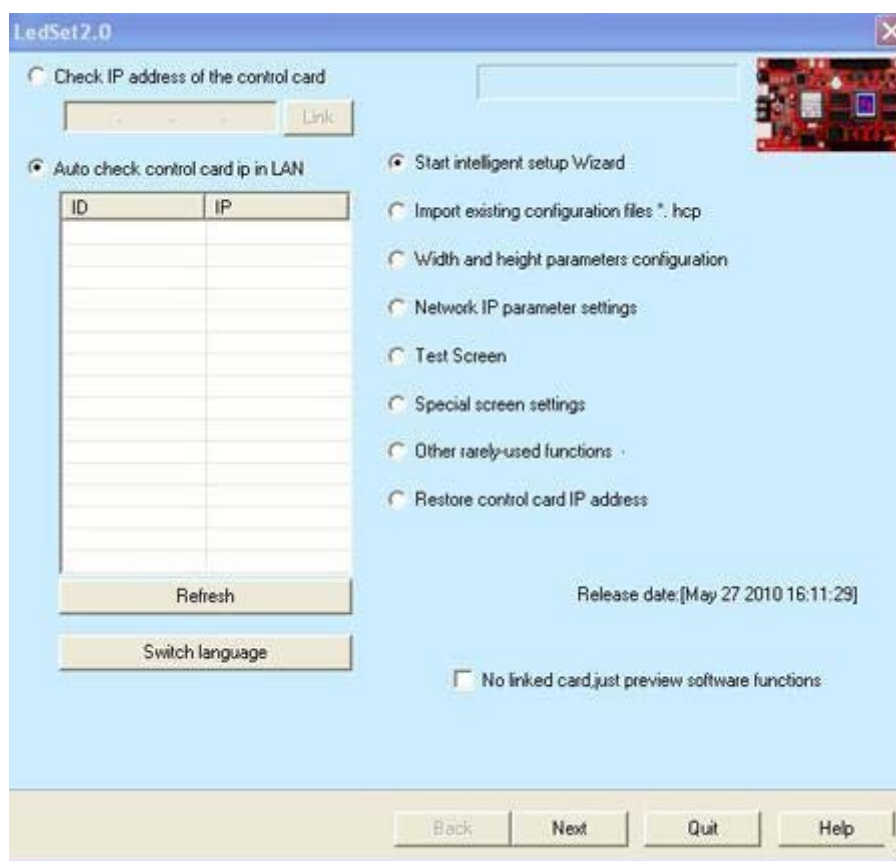


Image 1-1

Step 2: select “Start Intelligent Setup Wizard”, then click on “Next”, as shown in image 1-2 in below:

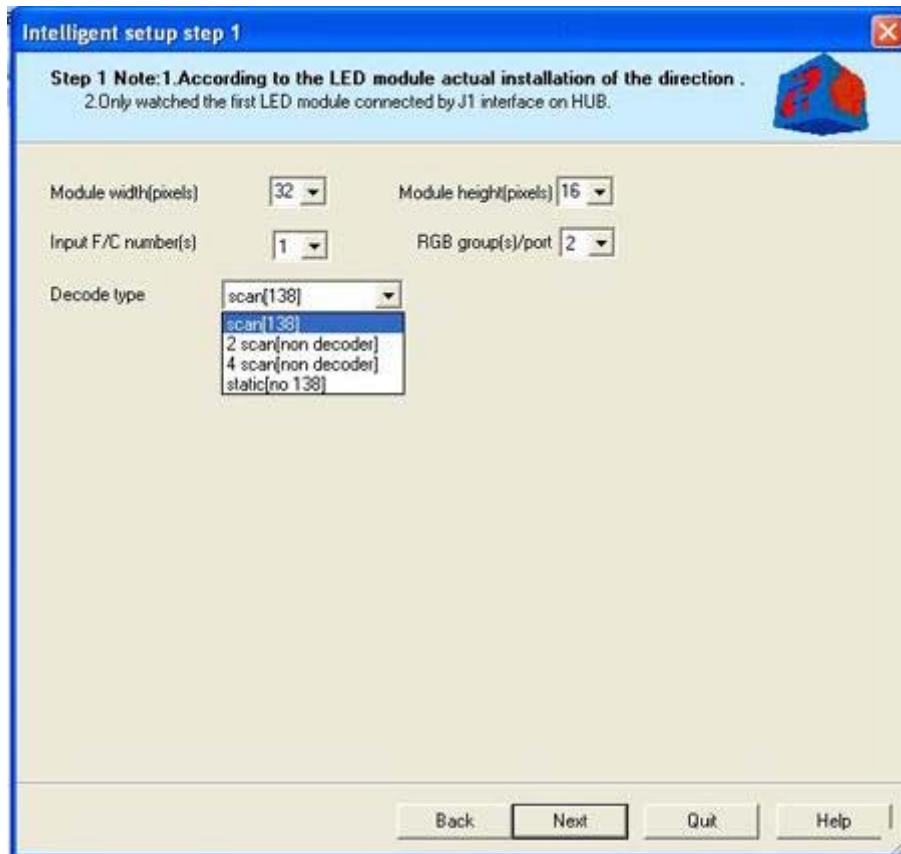


Image 1-2

Step 3 after configuring then click on “Next”, as shown in 1-3 in below, please select display state according to your LED screen

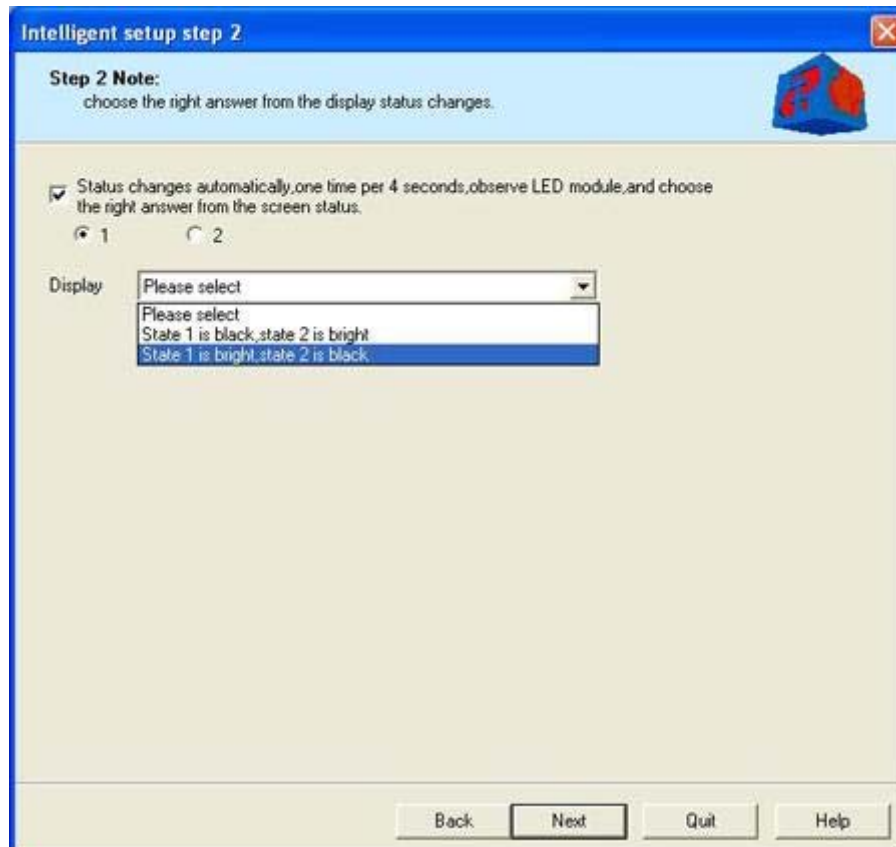


Image 1-3

Step 4, click on “Next” then do as Step 3, as shown in image 1-4 in below:

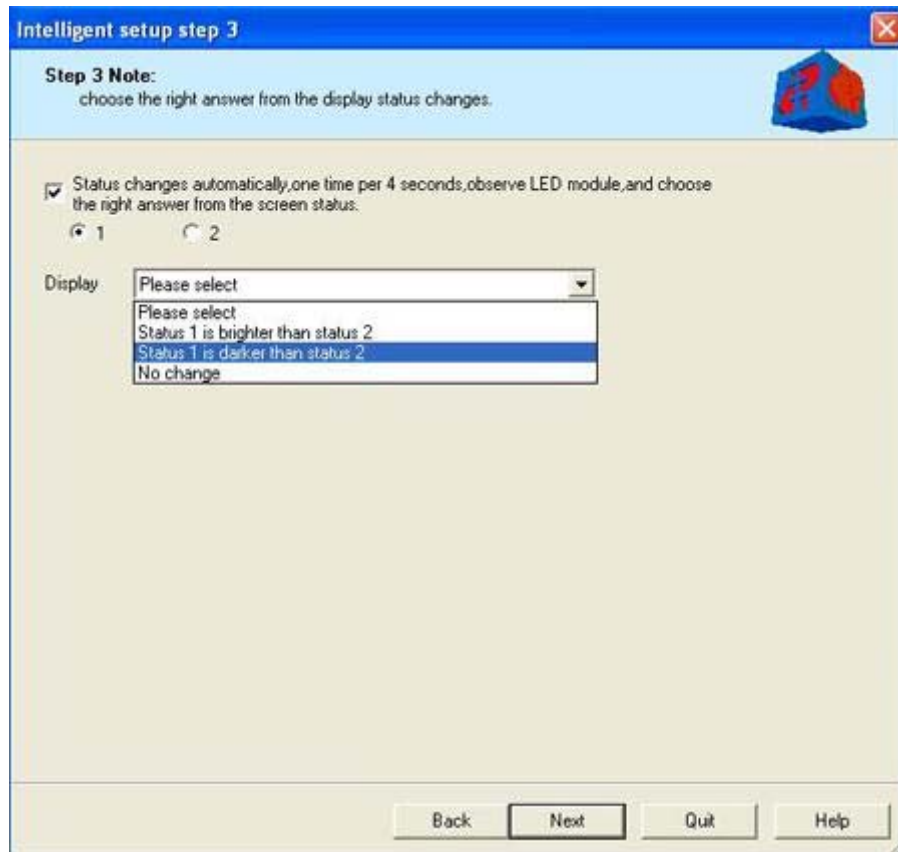


Image 1-4

Step 5, click on “Next” then select color according to display state, as shown in image 1-5 in below:

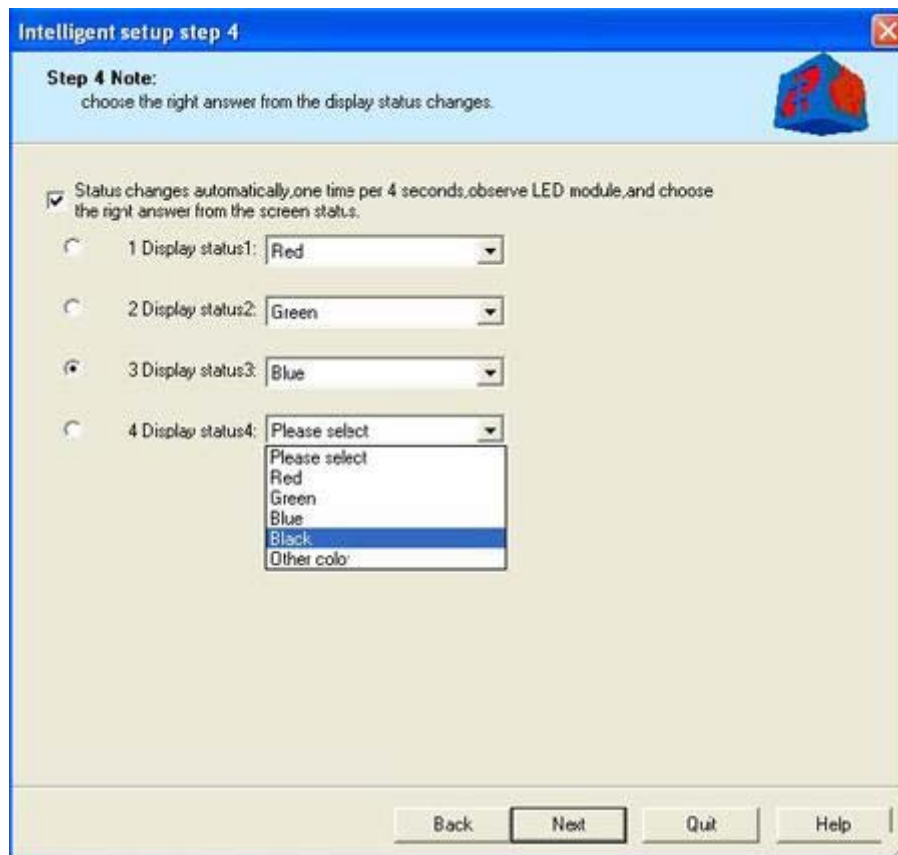


Image 1-5

Step 6, after finished, click on “Next” then an interface will appear, as shown in image 1-6 in below:

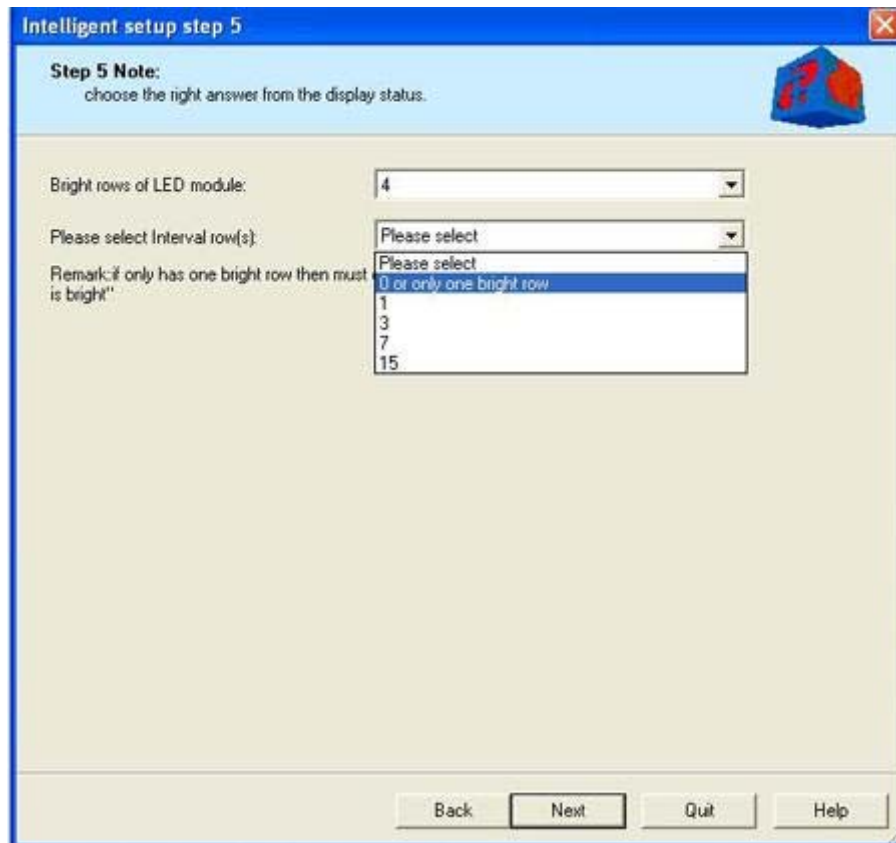


Image 1-6

Step 7, click on "Next" then you will see this interface as shown in image 1-7 and image 1-8 in below:



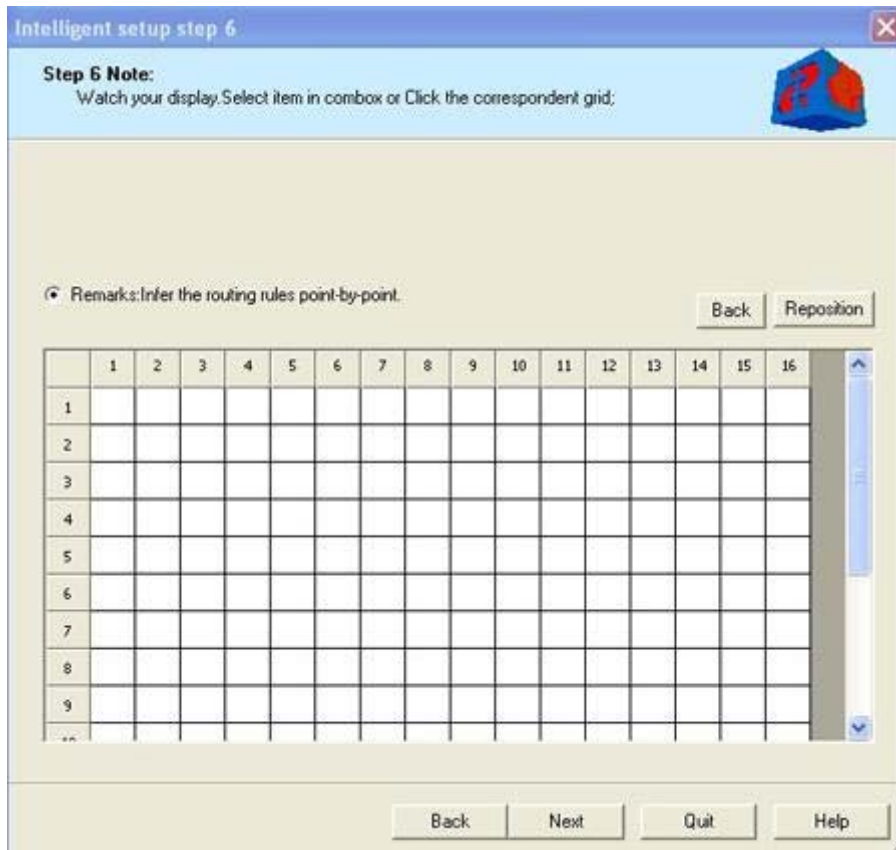


Image 1-7



Image 1-8

After clicking all of pixels that display on LED screen, then you can see effects as shown in image 1-9 and 1-10 in below:

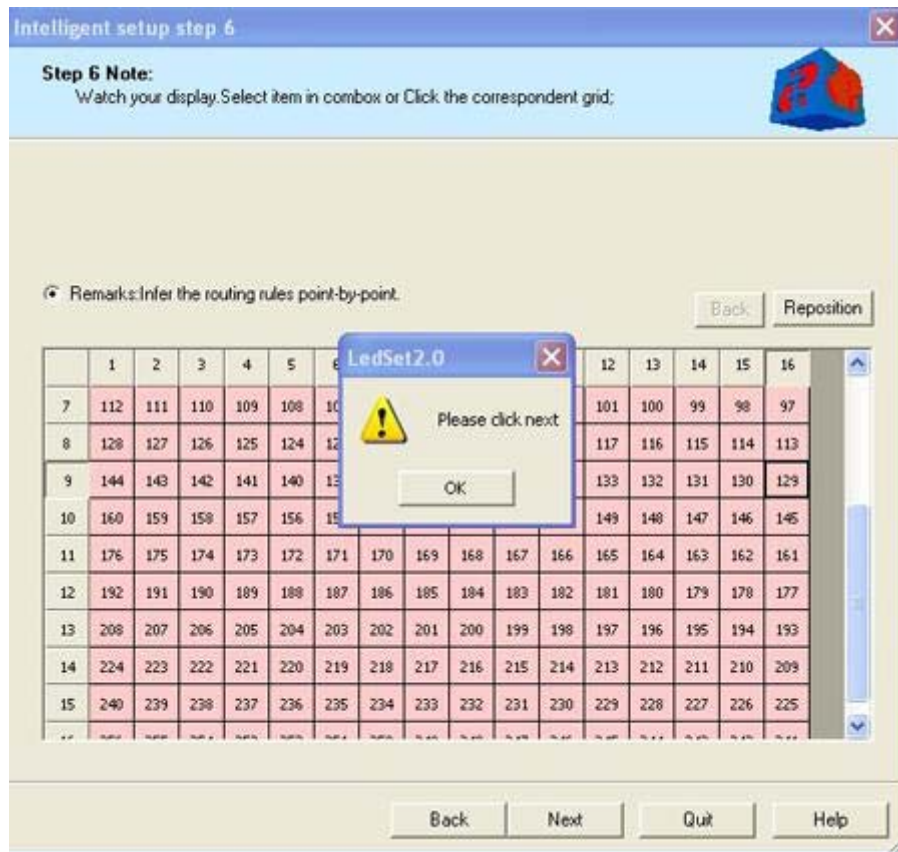


Image 1-9



Image 1-10

Step 8, after finishing scanning, a dialogue box will appear, please click “OK” and “Next”, as shown in image 1-11 in below, if it is normal, then the LED screen will display oblique state, as shown in image 1-12 in below:

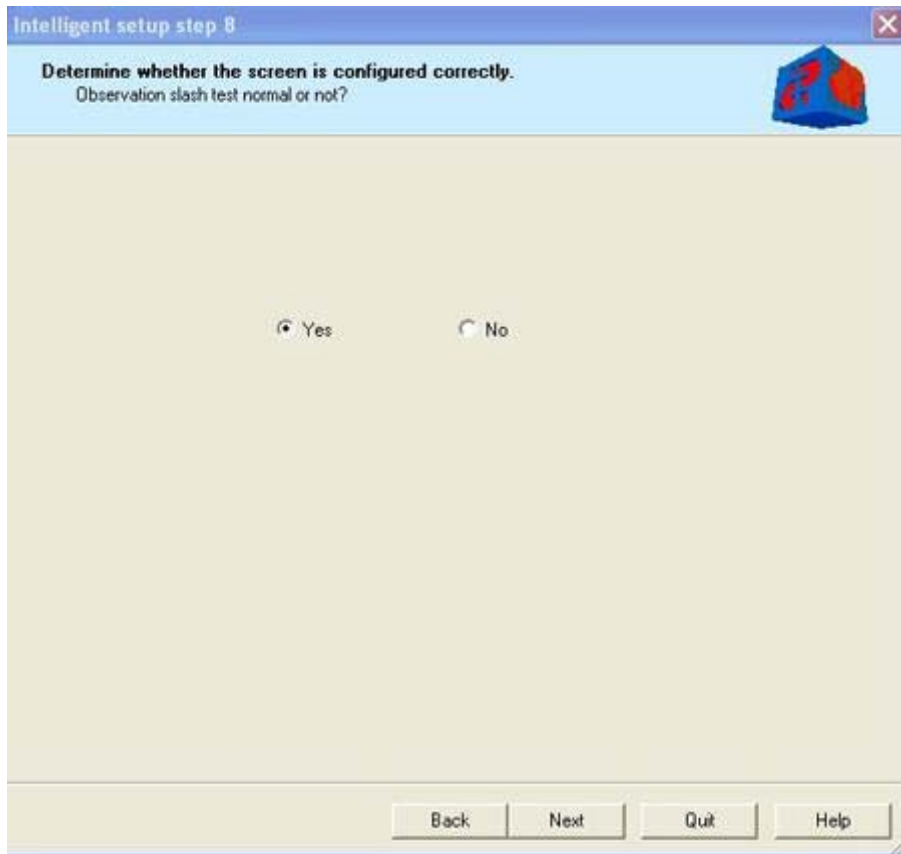


Image 1-11



Image 1-12

Step 9, please watch that oblique is normal or not, if it is normal, then click “Yes” and “Next”, save this hcp file; if it is abnormal, please repeat those steps again, as shown in image 1-13 in below:

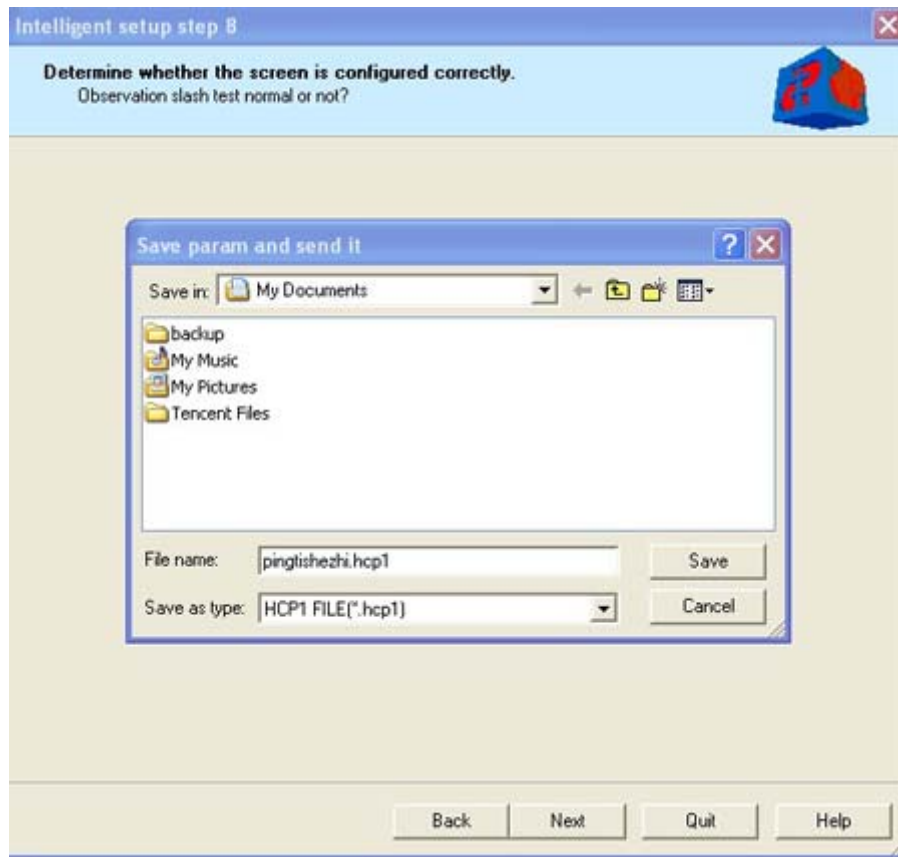


Image 1-13

Step 10, after saving this file, click on “Yes’ and the LED screen will restart, as shown in image 1-14 and 1-15 in below:

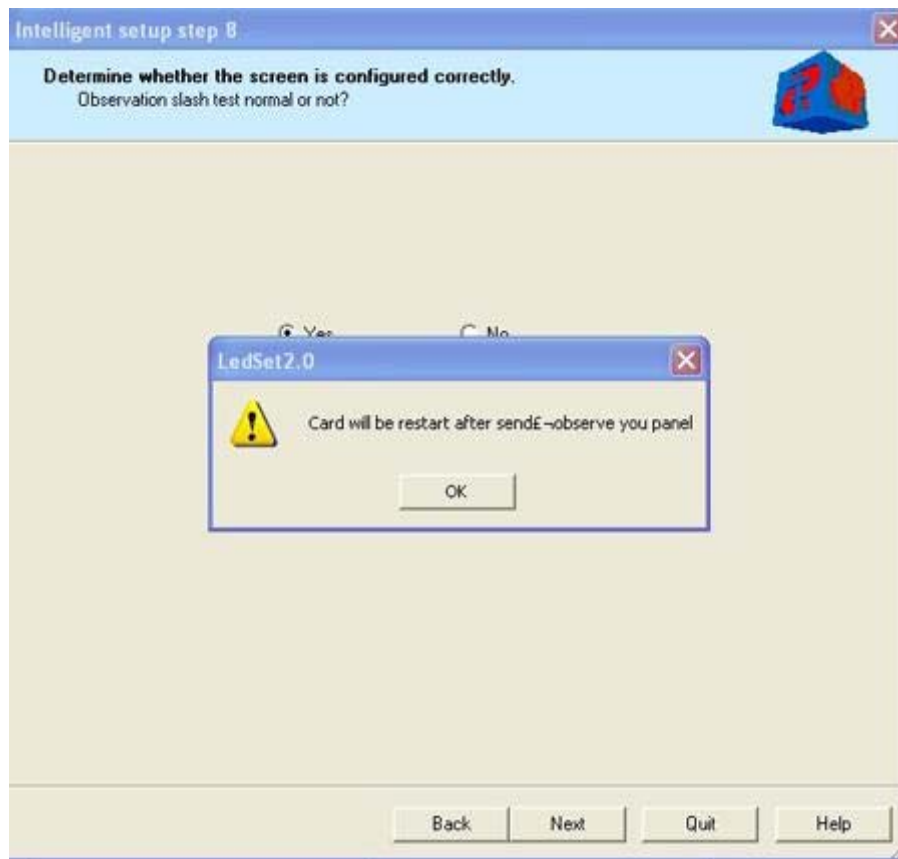


Image 1-14



Image 1-15

Step 11, clicking on “Back to home” to finish as shown in image 1-16 in below:

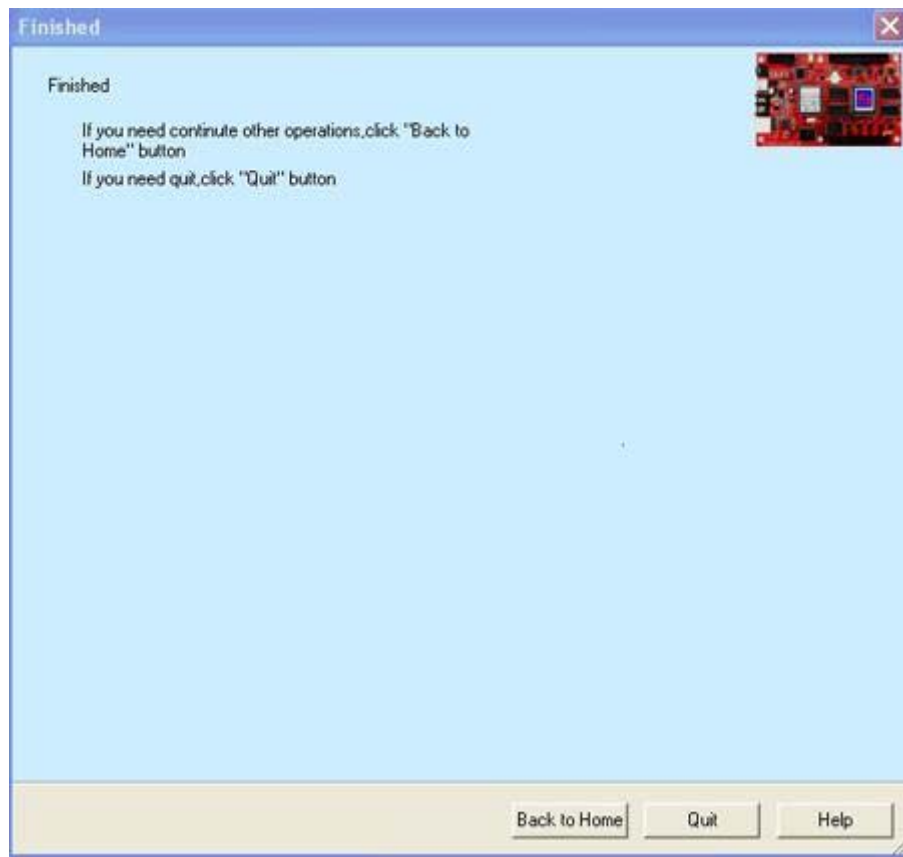


Image 1-16

3. Import existing configuration file .hcp

For the LED screen that have configured already, you can import .hcp file directly. Steps as follows:

Step 1, start LEDset then select the “Import existing configuration file .hcp” option, then click “Next”, as shown in image 1-17 in below:

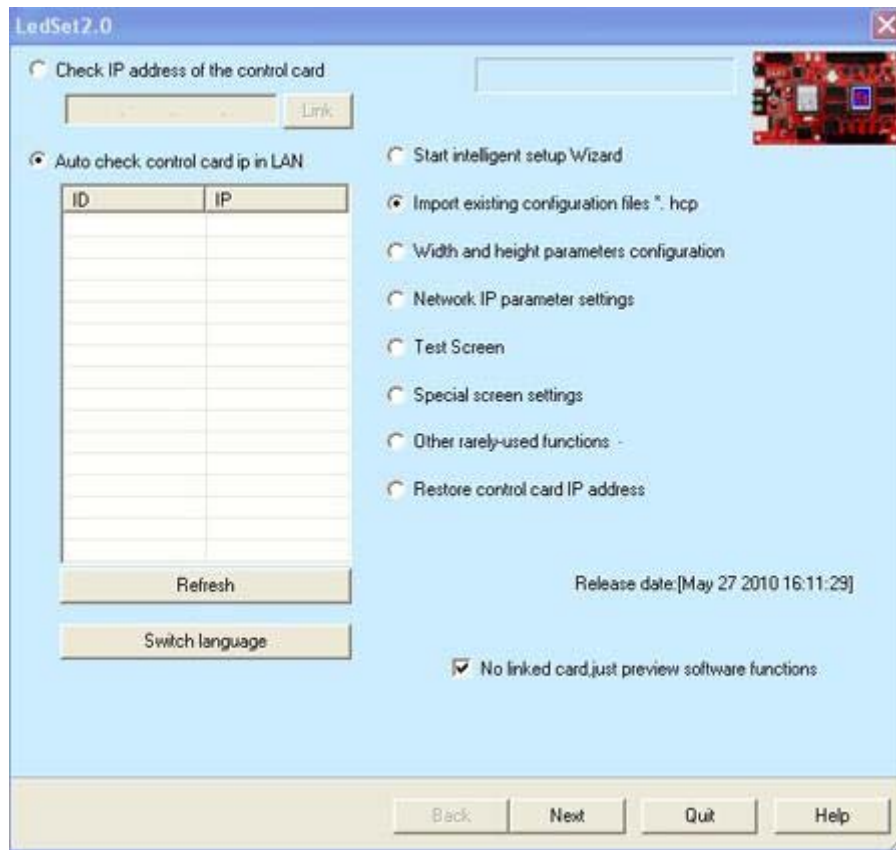


Image 1-17

Step 2, click on “Select .hcp” button then a dialogue box will appear, as shown in image 1-18 in below:



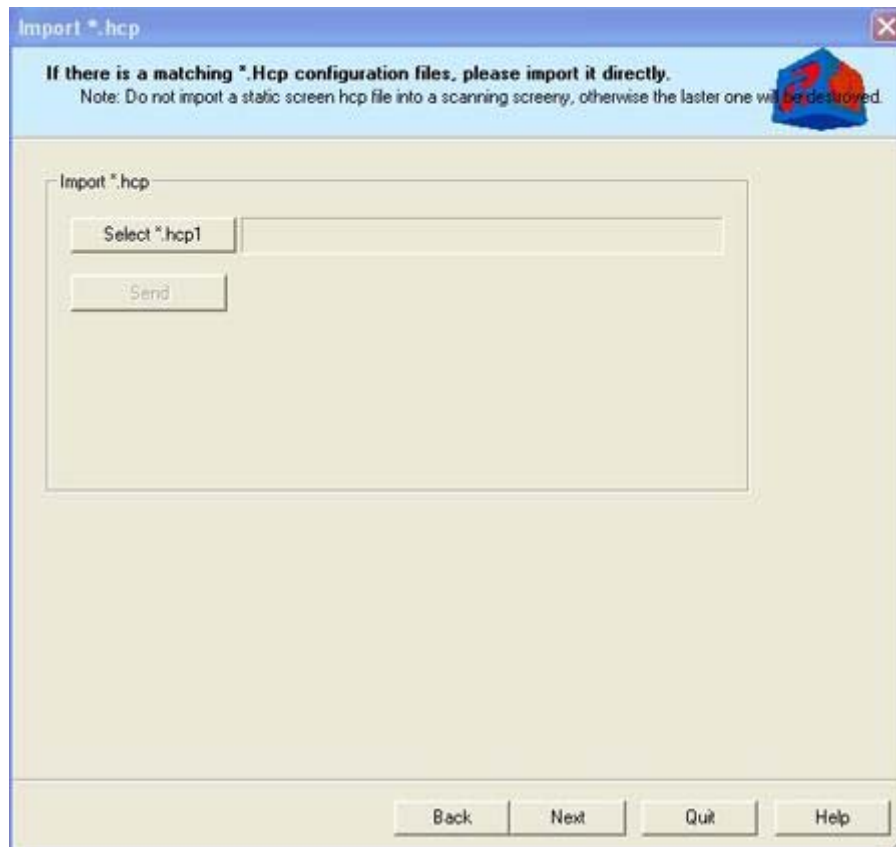


Image 1-18

Step 3, please choose the file and then import it, as shown in image 1-19 in below:



Image 1-19

Step 4, add this file and then you can see this interface as shown in image 1-20 in below:



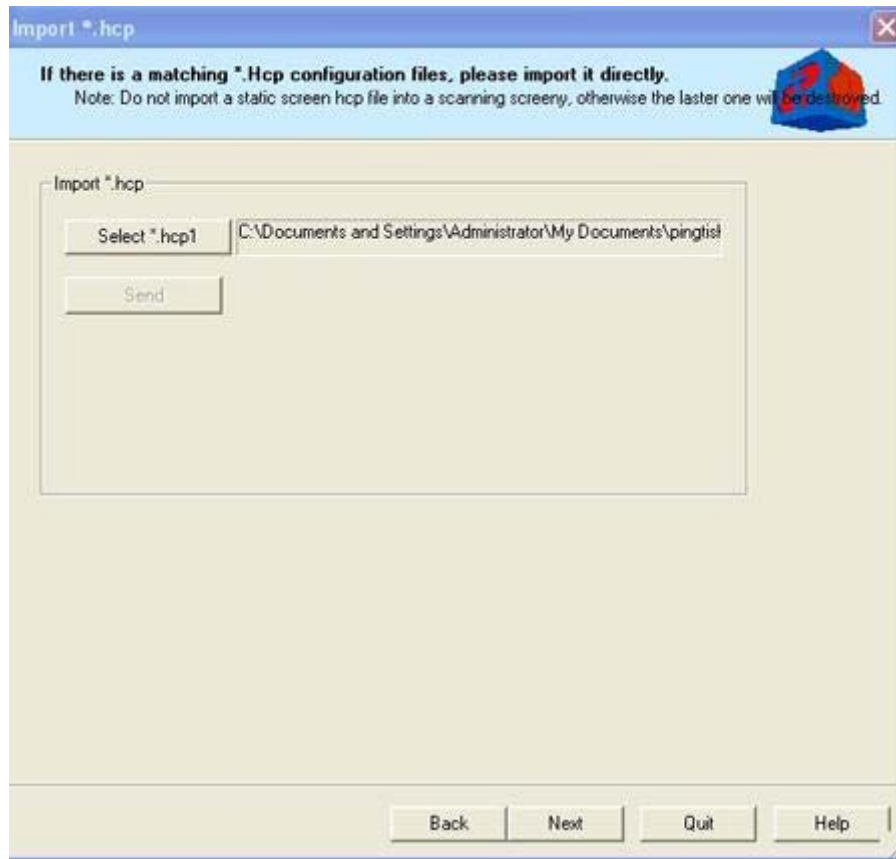


image 1-20

Step 5, click on “Send” button then you can see this interface as shown in image 1-21 in below:

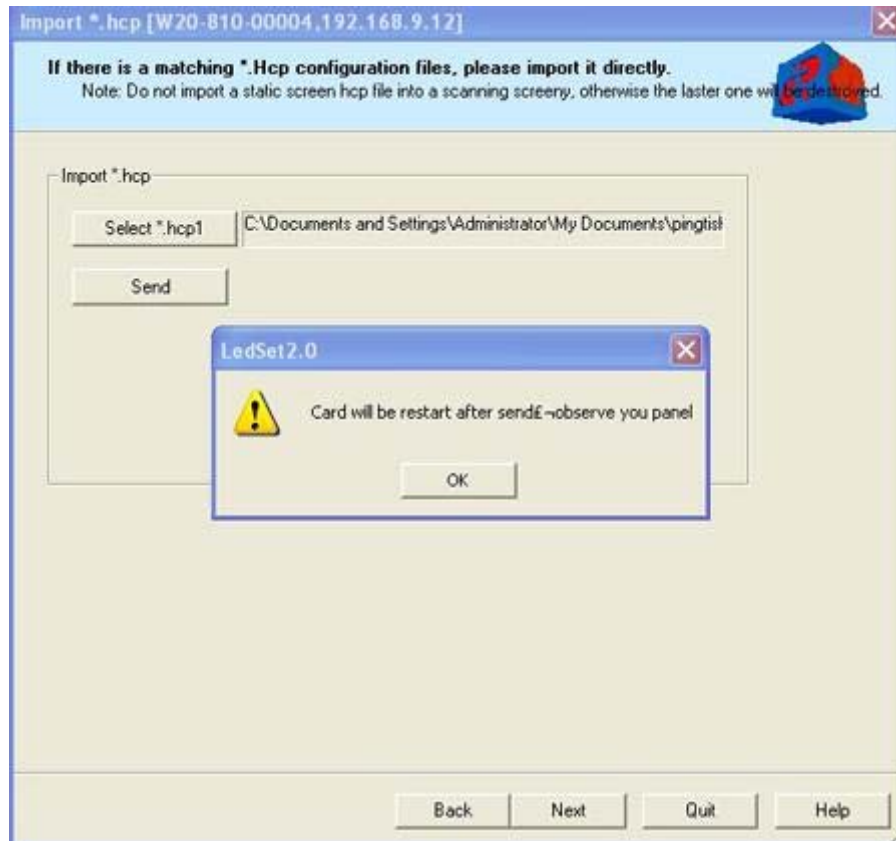


Image 1-21

Step 6, click “Yes” and then watch LED screen, as show in image 1-22 and 1-23 in below:



image 1-22

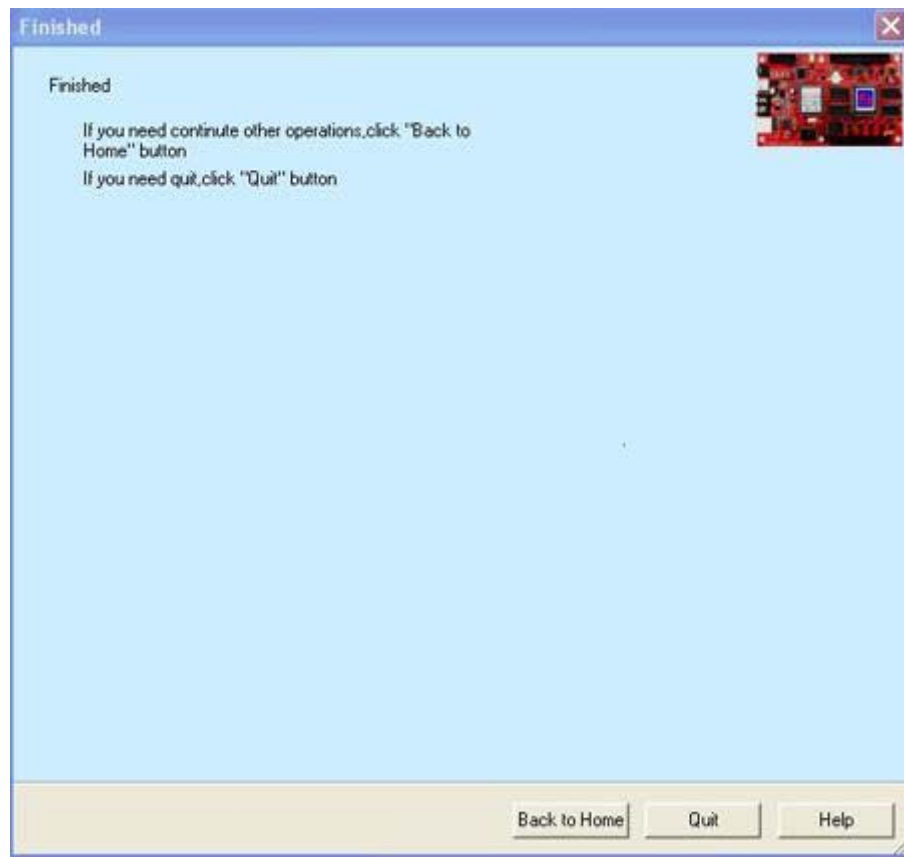


Image 1-23

#### 4. Width and Height parameters configuration

Configured width and height of LED screen and keep them the same with those of program in LEDEditor software, steps as follows:

Step 1, start LEDset as shown in image 1-24 and select “Width and Height parameters configuration”,

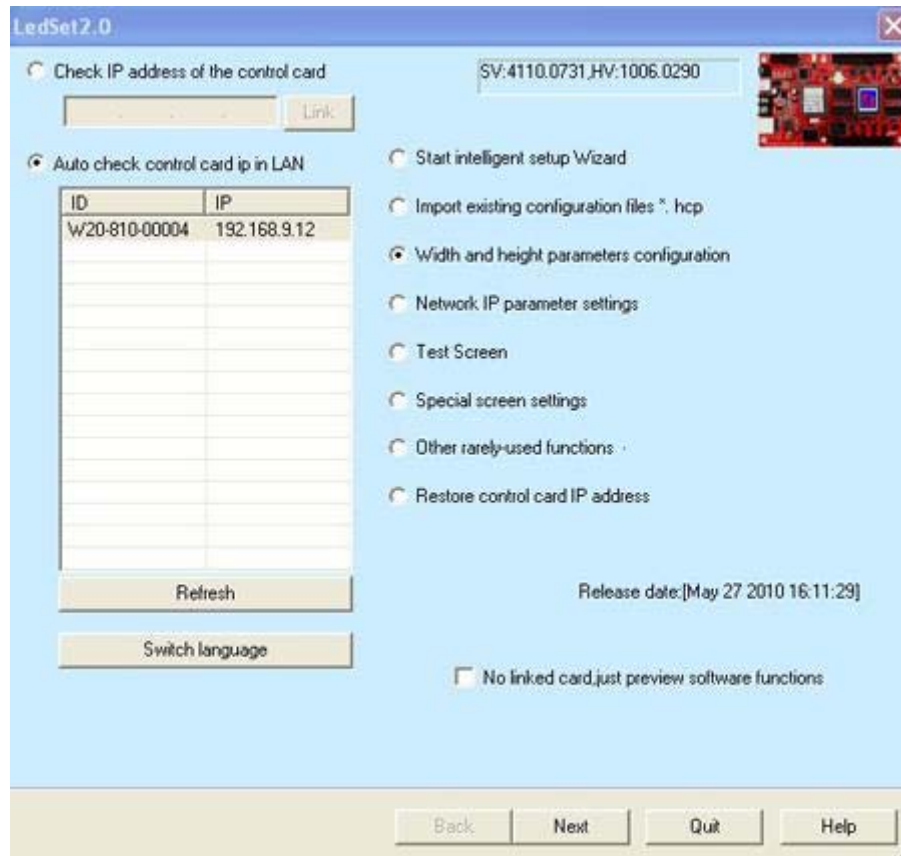


Image 1-24

Step 2, click on “Next” then a “Basic parameters configuration” dialogue box will appear, you can input all parameters according to requests, as shown in image 1-25 in below:

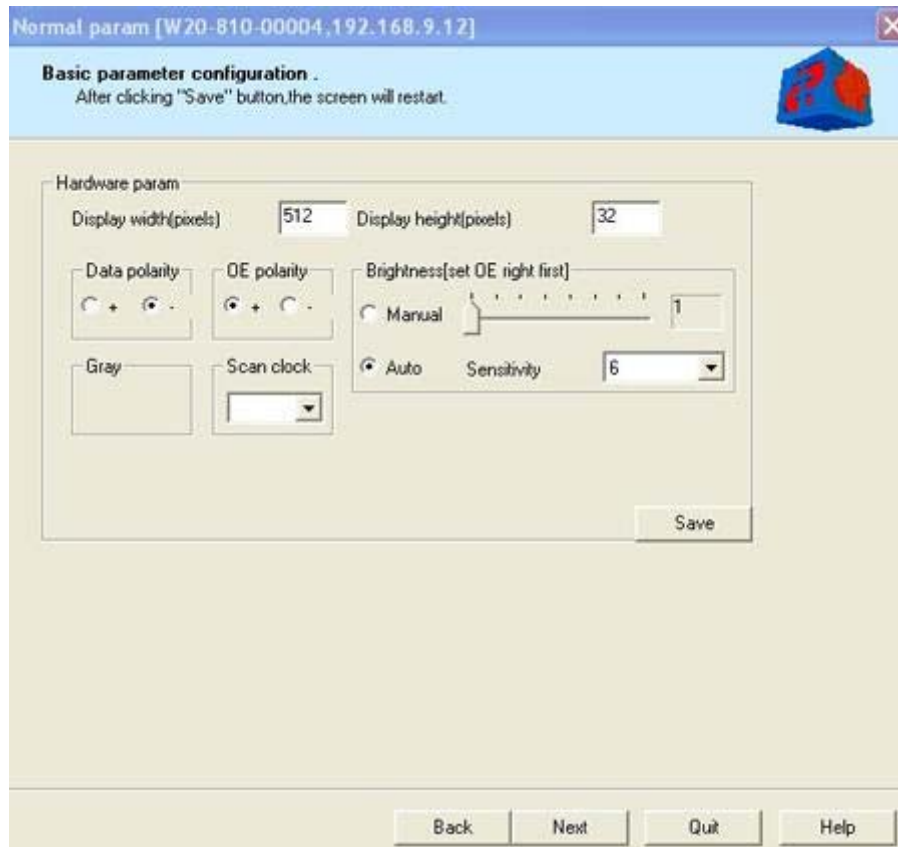


Image 1-25

Step 3, after configuring, click on “Next” as shown in image 1-26 in below:

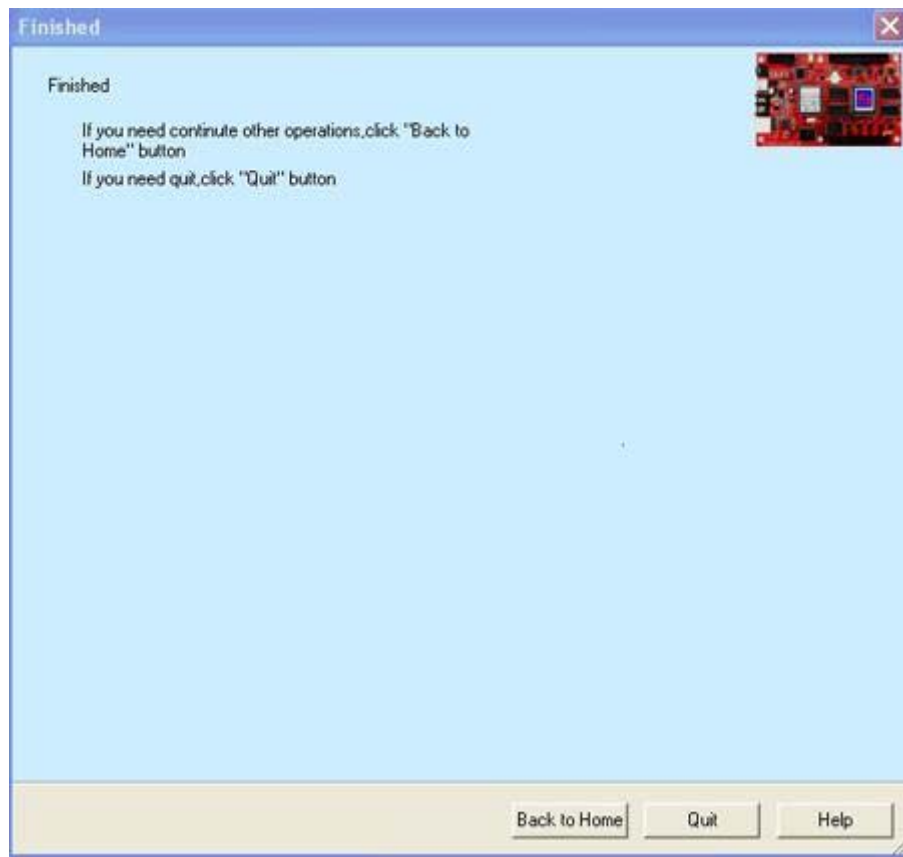


Image 1-26

## 5. Network IP parameter settings

Steps of setting network IP parameter as follows:

Step 1, start LEDset then select "Network IP parameter settings" option, as shown in image 1-27 in below:

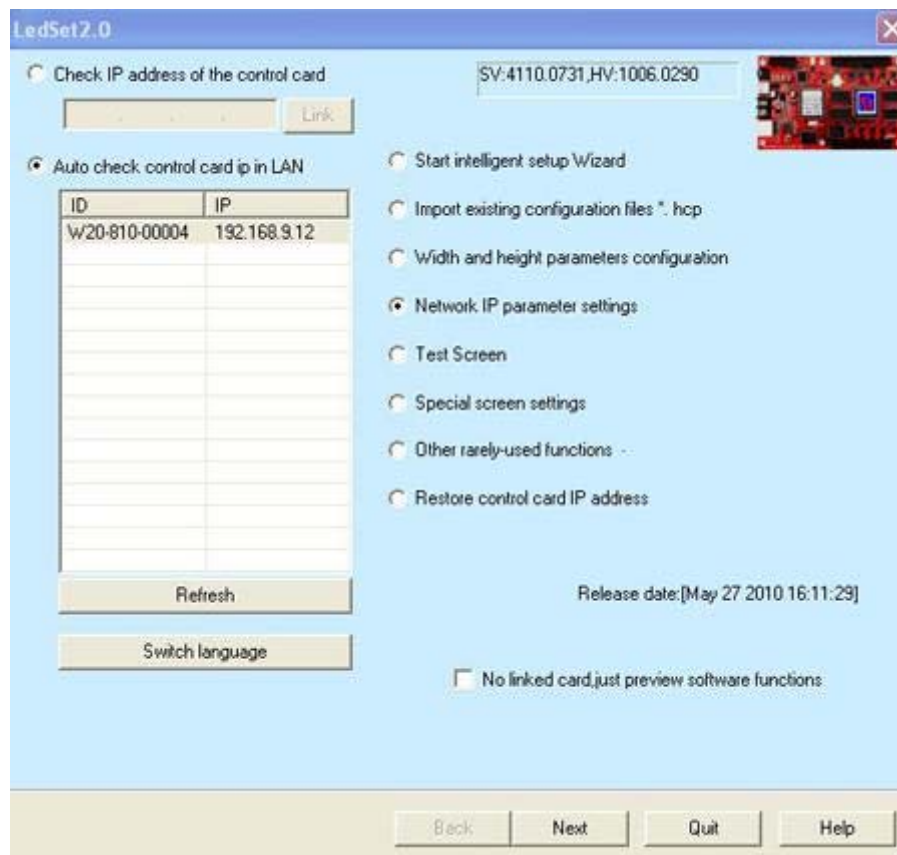


Image 1-27

Step 2, click on “Next” then “Network parameter” dialogue box will appear and you can input LED screen IP (usually it is the default address), as shown in image 1-28 in below:

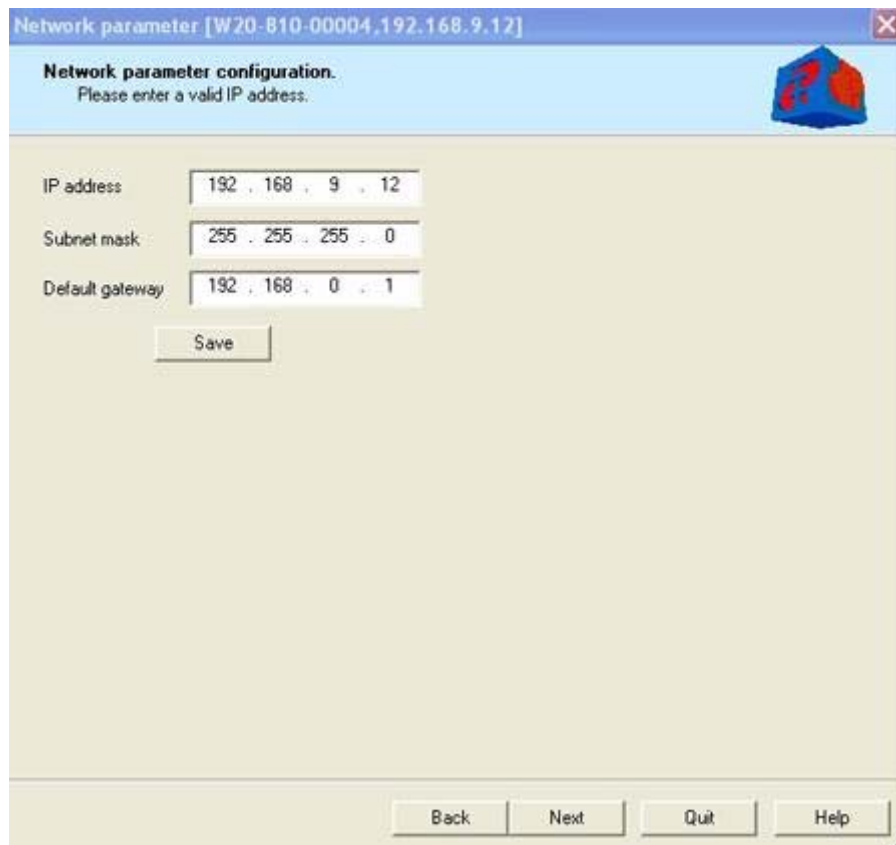


Image 1-28

Step 3, click on “Next” and finish, as shown in image 1-29. if you need to set up other parameters, please click “Back to home”, if you have finished, please click on “Quit”.



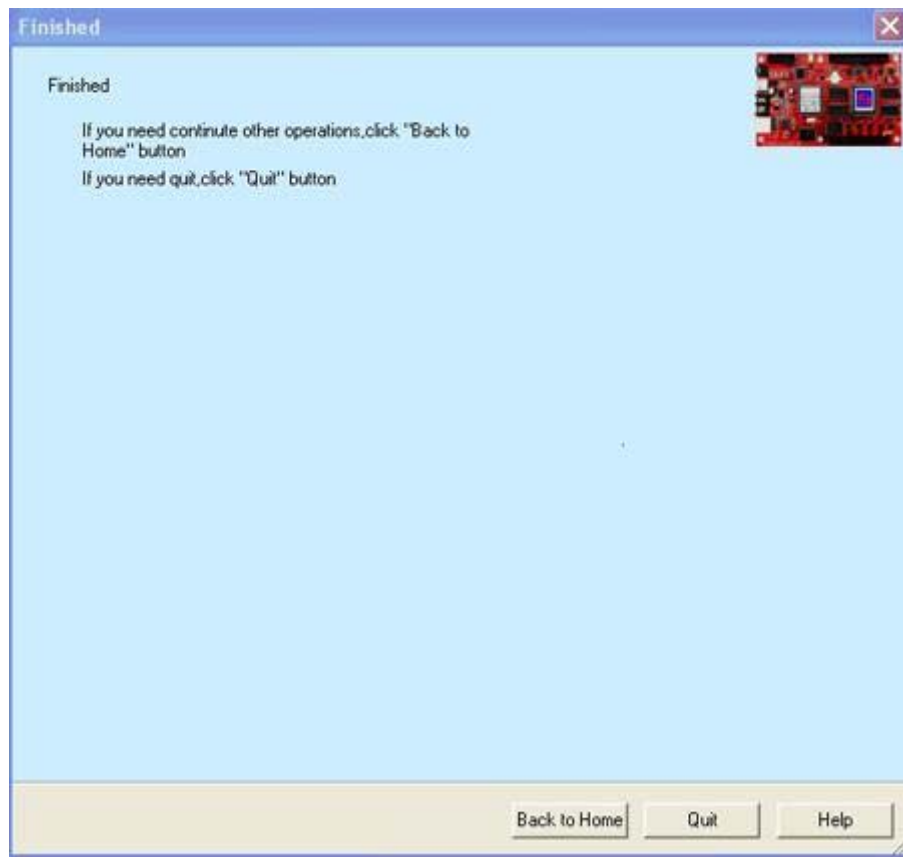


Image 1-29