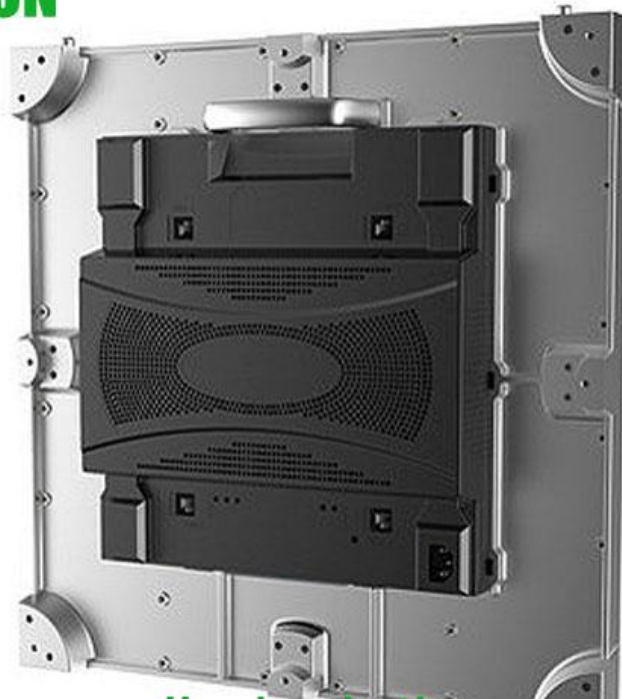


## LEDsolution 1.579mm Die-Cast Indoor SMD LED Panel

**LEDsolution®**



[www.iledsolution.com](http://www.iledsolution.com)

SHENZHEN LEDSOLUTION TECHNOLOGY CO.,LTD

Update 2013-1-1

Parameter	Unit	Value
Pitch	mm	1.579
Brightness	nits	800
Color temperature	deg. K	6,500
Viewing angle - Horizontal (50% brightness)	deg.	140(-70 ~ +70)
Viewing angle - Vertical (50% brightness)	deg.	140(-70 ~ +70)
Panel weight	kg	7
Panel width	mm	480
Panel height	mm	480
Panel depth	mm	77
Panel area	sq. m.	0.2304
Panel material		Epoxy paint coated Aluminum
Panel Mode		Die-Cast Fixed
Operating temperature range	deg. C	-20 to +60
Humidity operating	RH	10% ~ 60%
Pixel type and configuration	R/G/B	3-in-1 SMD
Resolution per panel		304x304
Dot per panel		92,416
Dot per sq. meter		401,111
LED per sq. meter		401,111
Recommended minimum viewing distance	m	1.2
Recommended best viewing distance	m	2-50m
Colors		281 Trillion
Grey scale (linear)	Levels	65,536
Brightness control	Levels	256
Contrast ratio		2,000:1
Processing depth	bit	16
Video frame rate	Hertz	60
Display refresh rate	Hertz	1,200
Input voltage (nominal)	VAC	110 to 240
Input power frequency	Hertz	50 to 60
Input power (max)	Watts / panel.	180
Input power (typical)	Watts / panel.	72
Lifetime (50% brightness)	Hours	≥100,000
Red wavelength (dominant)	nm	620~625
Green wavelength (dominant)	nm	520~525
Blue wavelength (dominant)	nm	470~475
Multimedia data format		DVI,MPG,AVI,WMV,RM etc.
Data interconnection		UTP Cat 5/Optical Fiber
Mounting system		Fixed

\*LEDSolution reserves the right to change any specifications without notice.